

Accessories—LeakTek™ Program

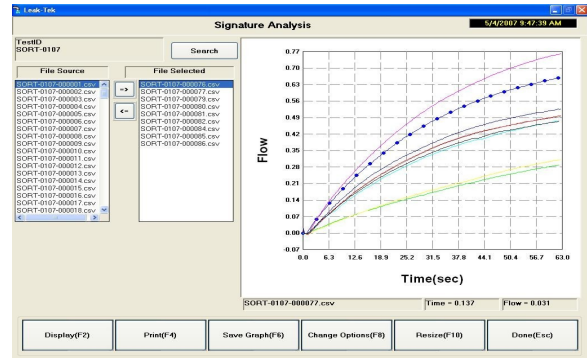
LeakTek™: A PC-Based Data Acquisition Program

Software Applications

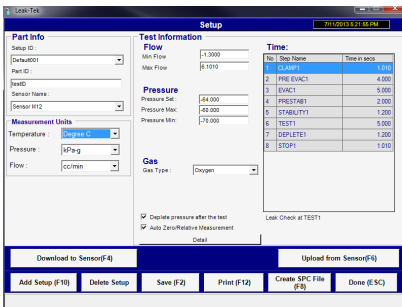
ATC's LeakTek™ Program provides a PC-based application which provides data collection and analysis, as well as test setup configurability. It communicates with ATC test instruments via RS-232 or Ethernet connections. The Windows XP Professional® operating system (or later) is required. Some of the program screens are shown below.

Features

- Enables configuration, storage, and retrieval of multiple test sequences and parameters.
- Test parameters are also stored in the test instrument's non-volatile memory for operation without an attached PC.
- User can specify mass or volumetric units, including flow at standard conditions.
- Gas type is selectable as well as limits for pressure and flow.
- Flow can be displayed based on volume or mass units per minute.
- Pressure can be displayed in various absolute or gauge units.
- Relative measurement allows you to auto zero the sensor just prior to stability and test modes (measurement).
- Reference measurement allows you to zero a master part, offsetting the entire curve of the test in reference to this master part or profile.



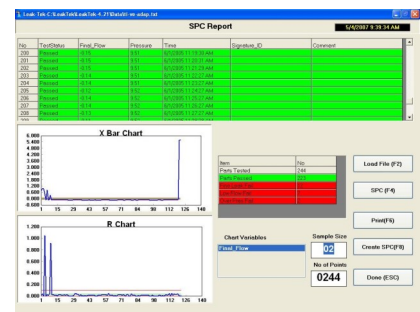
Signature Analysis Screen



Set Up Screen



Run Screen



Report Screen

- Displays current measurement values and test progress, including a graph display.
- Pass/fail result is shown at the end of a test.
- "Signatures" of leak flow vs. time can be captured and saved.
- Data storage can be automatic or manual, and each stored result can be numbered sequentially and automatically.

- Includes a summary for each part number, and statistical analysis of the captured signature data (X-bar, R-chart).
- Control limits are calculated.
- Graphs of current or previous test runs can be viewed and compared in the signature analysis screen.